

# **LIVE ROLLER BELTS**

***F.N. Sheppard & Co.***  
*Belting Specialties*



***FLVR-60AA***



***FLRB-50AA***

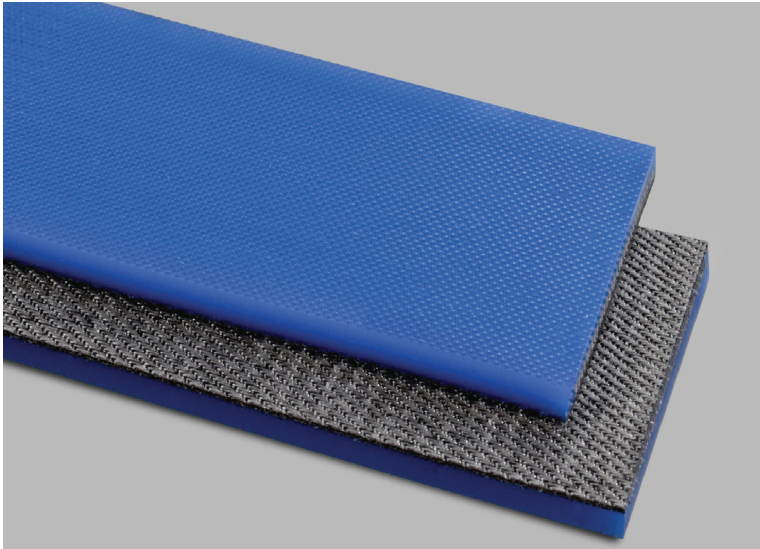


***FUK-3R***



# FLVR-60A

# FLVR-60AA



**TOP VIEW**



**BOTTOM VIEW**



**GAUGE**

4.5mm

**TOP SURFACE**

Blue TPU

**BOTTOM SURFACE**

Polyamide Fabric

**TENSILE MEMBER**

Aramid Cords

**TENSILE STRENGTH**

700 N/mm

**MIN. PULLEY DIAMETER**

110 mm

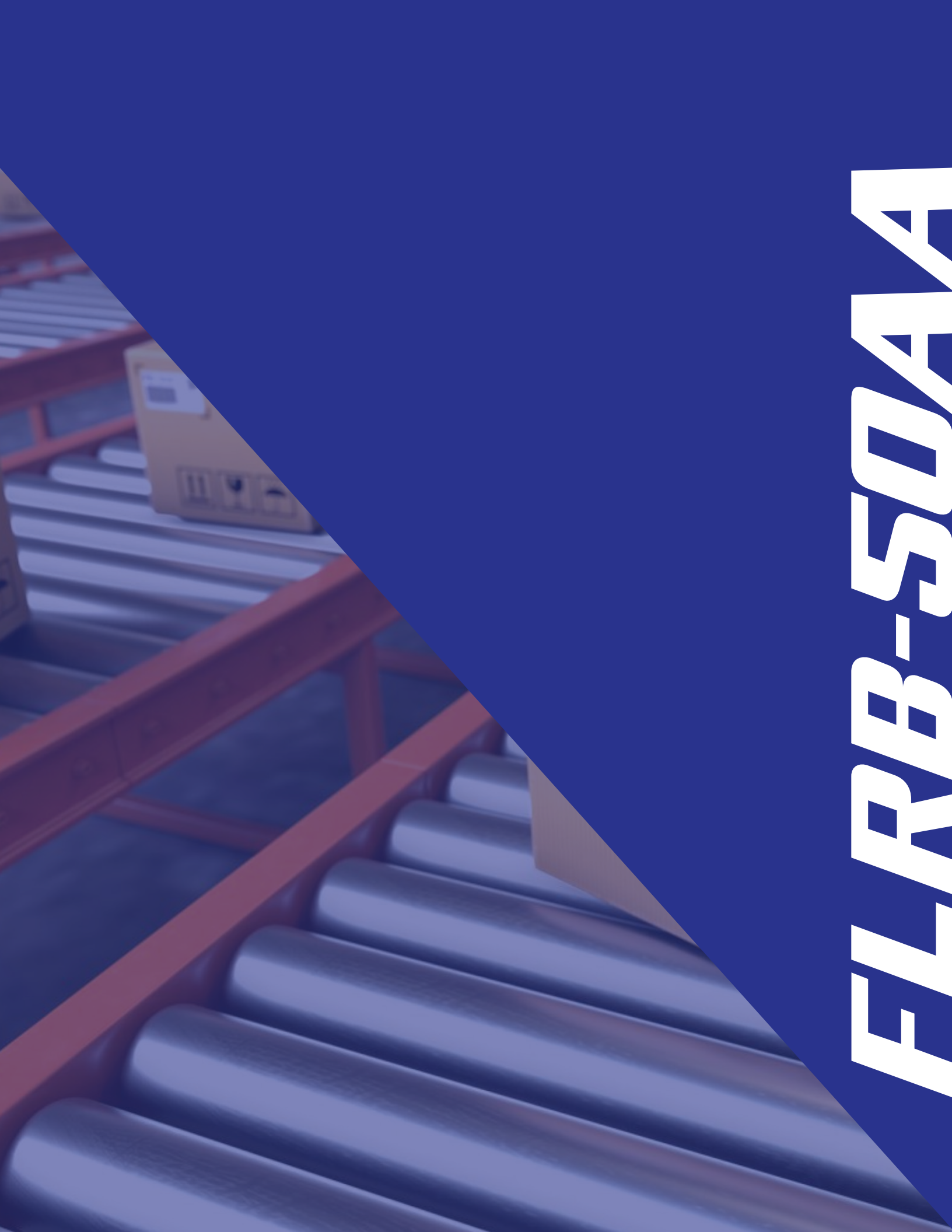
**STANDARD ELONGATION**

0.5%

**ANTI-STATIC**

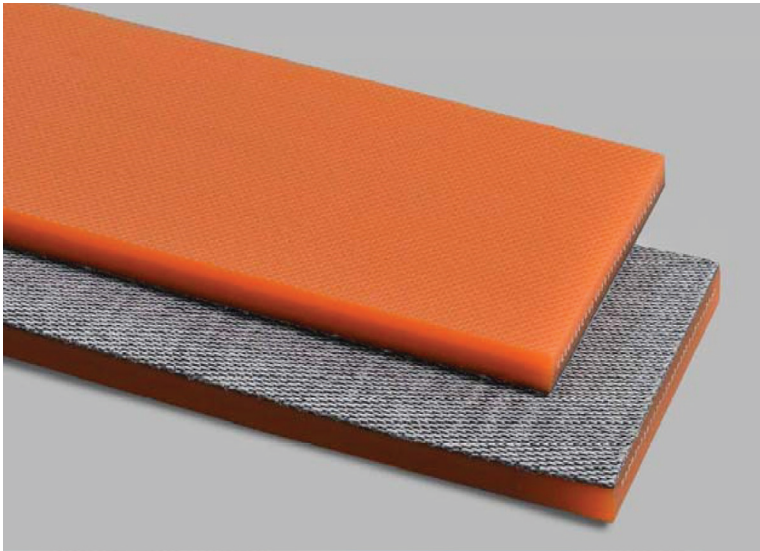
Yes





**FLRB-50A**

# FLRB-50AA



**TOP VIEW**



**BOTTOM VIEW**



**GAUGE**

4.5mm

**TOP SURFACE**

Orange TPU

**BOTTOM SURFACE**

Knit Fabric

**TENSILE MEMBER**

Aramid Cords

**TENSILE STRENGTH**

500 N/mm

**MIN. PULLEY DIAMETER**

110 mm

**STANDARD ELONGATION**

0.5%

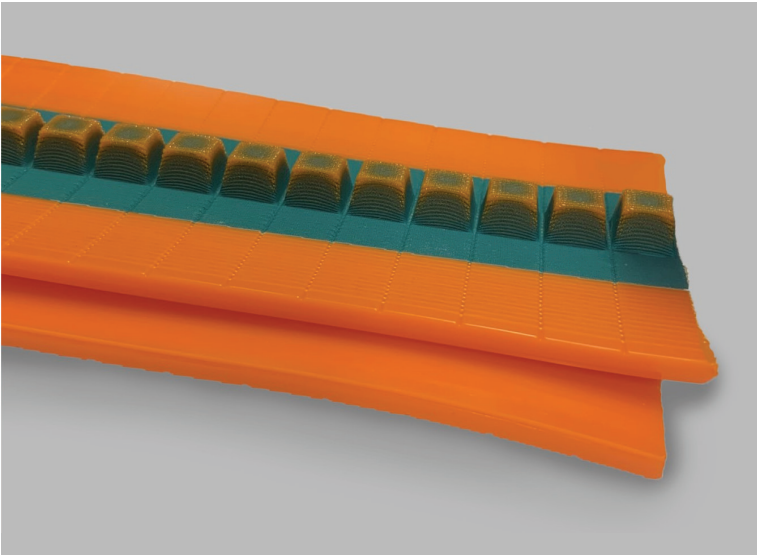
**ANTI-STATIC**

Yes



**FUK-3R**

# FUK-3R



**TOP VIEW**



**BOTTOM VIEW**



**GAUGE**

9.5mm

**TOP SURFACE**

Orange TPU

**BOTTOM SURFACE**

Polyamide Fabric

**TENSILE MEMBER**

Aramid Cords

**TENSILE STRENGTH**

526 lbs/in

**MIN. PULLEY DIAMETER**

60 mm

**STANDARD ELONGATION**

0.5%

**ANTI-STATIC**

No



# ***F.N. Sheppard & Co.***

## *Belting Specialties*

 [www.fnsheppard.com](http://www.fnsheppard.com)

 1-866-672-6339

 1261 Jamike Ave.  
Erlanger, KY 41018

### ***FIND US***

1261 Jamike Ave. . . . . Erlanger, KY  
10924 Granite St. Ste 300 . . . . . Charlotte, NC  
161 Pinnacle Dr. . . . . Jackson, TN  
10101 Bunsen Way . . . . . Louisville, KY  
4070 State Road 91 . . . . . Oshkosh, WI

### ***CONTACT US***

(859) 525 2358 . . . . . FAX (859) 525 8467  
(704) 295 1040 . . . . . FAX (704) 295 0145  
(731) 427 7440 . . . . . FAX (731) 423 3013  
(502) 499 8599 . . . . . FAX (502) 499 7330  
(920) 233 7070 . . . . . FAX (920) 233 7202  
(859) 653 3857 . . . . . FAX (856) 384 8415